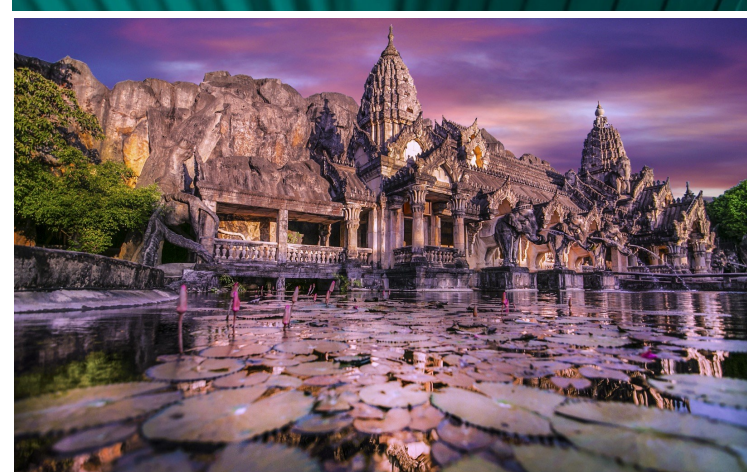




Phuket FantaSea, an award winning 60-acre night time cultural theme park, is the ultimate Las Vegas style show infusing Thai culture and mythology with magical illusions, special effects, aerial ballet, four dimensional effects, acrobatics, pyrotechnics and live animal performances featuring over 30 elephants! This highly entertaining theatrical production is suitable for both children and adults, and is performed in an awe-inspiring replica of an ancient stone palace reminiscent of Angkor Wat, with seating for 3,000. Before the show, enjoy a grand feast at the 4,000 seat 'Golden Kinnaree' one of the largest buffet restaurants in the world.

After dinner, take a stroll through Festival Village shopping paradise. The park also provides many games, elephant rides, cultural parades and live performances.



Tour Operator: Phuket Fantasea
Departure Dates: Tuesday, Friday & Sunday
Duration of Tour: 05:00 pm - 10:00 pm
Join transfer schedule:
 From hotel lobby:
 Show with dinner: 17.25 - 17.45 hrs.
 Show only: 19.00 - 19.25 hrs.

Prices

Program	Adult/Child*
• Show only	THB 1,800/1,800
• Show with Inter. Dinner	THB 2,200 / 2,000
• Gold Seat Upgrade	THB 350
• Round Trip Transfer	THB 450

**Child is between 101-140cm or 40-55 inches in height.
 Infant not exceed to 100cm or 3'3" are free of charge but
 no seat in theater nor van.*

What to bring

► Camera ► Spending money